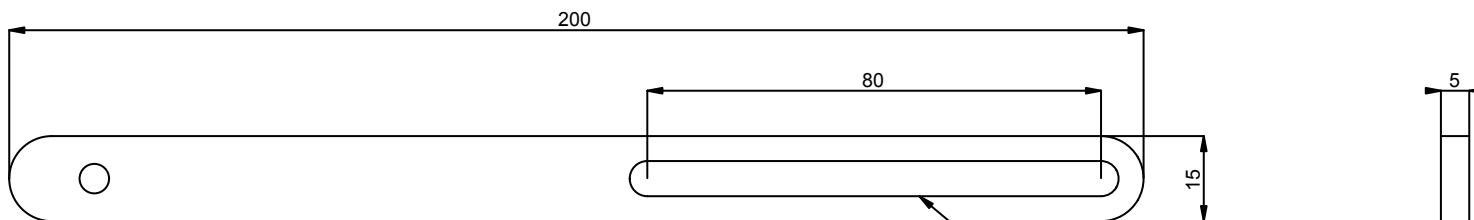
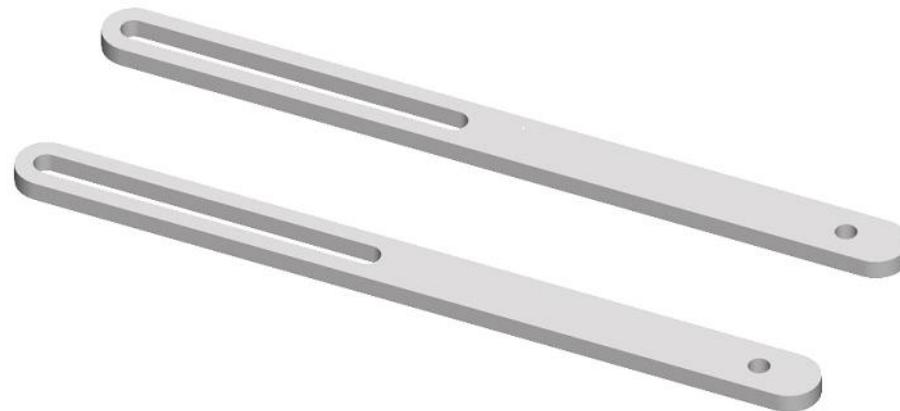


SET OF 2 LONG ARMS:  
 THESE CAN BE USED IF THE STANDARD  
 ARMS ARE NOT LONG ENOUGH.  
 USABLE WITH UNIVERSAL BRACKETS.



MOUNTING POSSIBILITY: M3, M4, M5 and M6

Maximum load	NA
Package weight	0,25 KG

product: SET OF 2 LONG ARMS (200mm)

product code: 003-1002

units: mm    sheet: 1 /1

SmartMetals® by  
 Sky-Lite Holland BV  
 Handelsweg 4  
 4231 EZ Meerkerk  
 www.smartmetals.eu

